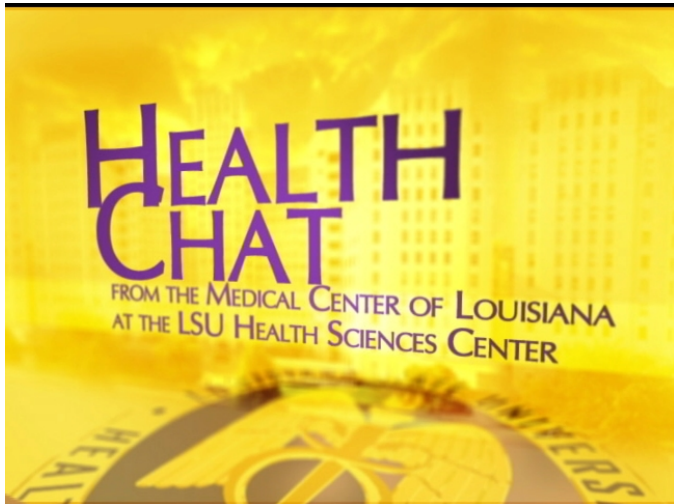


# This Week at MCL

A Memorandum to the Employees of The Medical Center of Louisiana, New Orleans  
Charity Hospital Campus ▪ University Hospital Campus

October 11-17, 2004



## MCL Introduces "Health Chat."

The Medical Center of Louisiana is currently producing a series of educational spots that are airing on Channel 15, WWL's rebroadcast channel. The name of the series is Health Chat. The segments, running from 30 seconds to two minutes, cover a variety of healthcare topics. They started airing September 6 and, budget allowing, will be ongoing. September topics included immunizations, homework wars between children and parents, and information about bullying. The October segments are about cancer, particularly breast cancer and prostate cancer.

## A Fitness Basket Could be Yours!

In celebration of this, National Physical Therapy (PT) Month, our PT areas within MCL will give away a "fitness basket" containing items to enhance or encourage you to begin your exercise routine: a duffle bag, exercise music, pedometer, water bottle, and much more. To register for the free drawing, stop by one of our PT areas during the following times and while there see what goodies are available and what physical therapy is all about:

**October 11- 15:** Acute PT, W606, 6<sup>th</sup> floor,  
Charity Campus

**October 18- 22:** Acute Outpatient PT, 1<sup>st</sup> Floor,  
University Campus

**October 25-29:** Rehab PT Gym, W506, 5<sup>th</sup> floor,  
Charity Campus.

You can also register from 11 a.m.-1 p.m. on October 15 and 29 in Charity cafeteria and October 22 in University cafeteria. The drawing for the basket will take place after 1 p.m. on October 29<sup>th</sup>.

## MCL Talent Show Set this Friday.

The 2004 MCL Talent Show will take place **Friday, October 15, 6 p.m. in the LSU auditorium, 1542 Tulane Avenue.** You can purchase tickets Monday, Wednesday and Friday from 11:30 a.m. to 1 p.m. at the marked table inside the cafeteria on



Charity Campus and outside the cafeteria on University Campus. Cost is \$5 in advance, \$7 at the door, payable in cash or by check payable to the MCL Foundation. You also can purchase tickets from any Employee Activities Committee member (see last week's issue for their names.) Fifteen acts, including singers, dancers and comedians, are scheduled to appear; face painting will also be offered. All proceeds will go toward the Employee Emergency Relief Fund to help our fellow employees in time of emergency need.

## And now there are 208 . . .

Following are the names and years which have been added to or corrected on the final listing of honorees who will receive invitations to the MCL Service Awards breakfast on Thursday, November 18<sup>th</sup>:

**Lodonia Michel** and **Frank Sparks**, 40 years; **Gracie Atkins**, **Dianne Coleman**, **Phila G. Decuir** and **Debra Dorsey**, 30 years; and **Sharon Bright**, **Marie W. Campbell**, **Regina Morgan**, **Anthony Parnell**, **Kathy Tanner** and **Beatrice B. Williams**, 25 years. The 208 MCL employees who will be honored will represent an amazing 5,745 years of service! **The Honorable Cynthia Willard-Lewis**, Councilwoman, District E, will be the guest speaker at the breakfast.

## Shuttle Stops: An Update.

Please note the following changes to the information printed in the September 27-October 3 issue of *This Week at MCL* about the sites where the shuttle driver makes pickups: 6 a.m.-6 p.m. – clinic on South Roman Street, Palmyra and Cleveland streets, and Palmyra Street parking site, mid-block between Tulane and South Roman. Added to the shuttle stops is the Blue parking lot, pick up at the corner of South Roman Street and Tulane Avenue.

## Interpreters Needed.

If you fluently speak a language other than English, or if you know American Sign Language and would be interested in interpreting for our patients, please contact **Key Bernard**, Education/Staff Development, at 2-2687. You may be eligible for premium pay for the hours you are available.

## Happenings.

- **Interview & Selection Class.** 9-11 a.m. October 12, and 1-3 p.m. November 16. To register for either of these classes call **Melinda McBride**, Human Resources, at 2-9320.
- **Tulane University Health Sciences Center Medicine Grand Rounds.** 1430 Tulane Avenue, 1<sup>st</sup> floor auditorium, noon-1 p.m., October 13. “Viral Hemorrhagic Fevers: Fact & Fiction,” with **Dr. Daniel G. Bausch**, Associate Professor, Department of Tropical Medicine.
- **LSU Health Sciences Center Medicine Grand Rounds.** 1542 Tulane Avenue, 1<sup>st</sup> floor auditorium, 8-9 a.m., October 14. “Management of Fungal Infections,” 22<sup>nd</sup> Annual Harry Emerson Dascomb, M.D. Lecture-ship, by **Dr. Jack Sobel**, Visiting Scholar, Chief, Division of Infectious Diseases, Professor, Department of Medicine, Wayne State University, Detroit, MI.
- **The ABCs of Critical Care.** 7 a.m.-3:30 p.m., 9th floor, Charity, Education Department. October 25, *Essential Lagniappe*: Professional Responsibility, Psychosocial Aspects, IV Drip Calculations, Documentation & Pediatric Assessment – by **RNs Carolyn Robinson-Thomas** and **Deb Travis**, 3.9 contact hours; October 26, *Shocking Back to Reality*: Dysrhythmias & Treatment, Code Blue & Equipment Use – by **RNs Alicia Dean**, **Patty Dougherty** and **Dorothy Naquin-Plaisance**, 8.7 contact hours; October 27, *Airway First, Then*

*Breathe Easy*: Mechanisms of Trauma, Assessment & Resuscitation Pulmonary Assessment, ABGs, Airway Management, Ventilator Management & Complications – by **RNs Dominique Bergeron** and **Todd Tartavouille**, 8.1 contact hours. To register contact **Carolyn Robinson-Thomas** at 2-5268 or [crobin5@lushsc.edu](mailto:crobin5@lushsc.edu) to register. Cost: \$10 per class for MCL employees; \$45 for non-employees.

- **Hazardous Material Team Training.**

November 8, University auditorium; November 9, Charity auditorium. The two-day session covers skills and knowledge required to be a HazMat Team member. 16.8 contact hours/CEUs for RNs, radiology techs and respiratory therapists. Register in Staff Development, 9 center, Charity Campus. For further details call **Tim Butcher** at 2-2687.

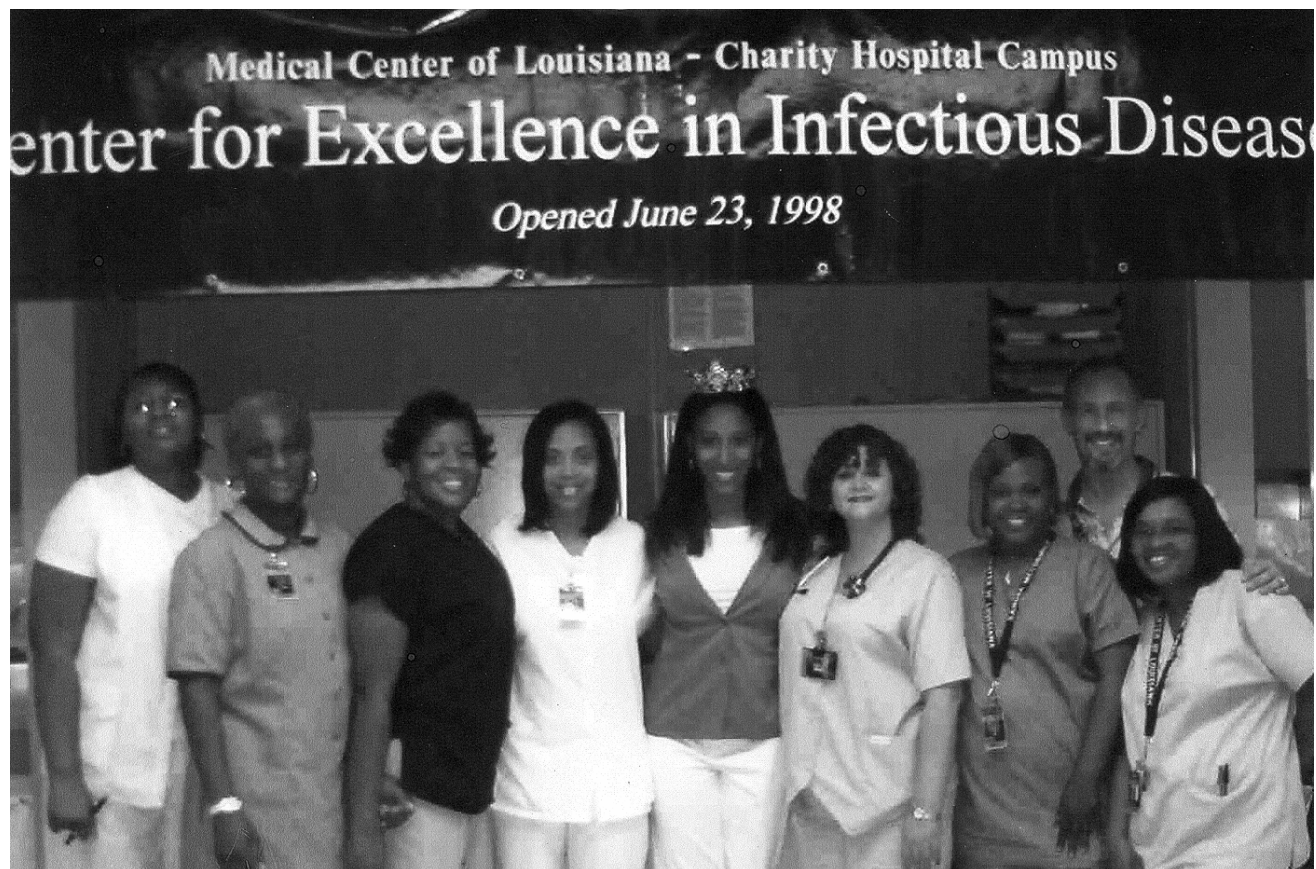
- **Asthma Group Session.** Tuesdays, 2-3 p.m., General Clinical Research Unit (GCRU), 5 East, Charity Campus. Bring your asthma medications and devices, including inhalers, peak flow meters and spacers; peak flow meters and spacers will be provided if you do not have your own. Open to anyone with asthma. Free, but call **Adonica Webb** at 574-1767 or 2-0237 if you plan to attend.

- **Exercise Class.** Tuesdays & Thursdays, 4:30-5:30 p.m., Education, 9 center, Charity Campus. For further details contact **Paul Hildreth** via e-mail.

- **Outpatient Congestive Heart Failure/Disease Management Teaching Session.** Each Wednesday, 8-9 a.m. and Thursday, 1-2 p.m., Cardiovascular Clinic, 2025 Gravier Street, room 601. Those who receive their medical care at MCL and have had their diagnosis verified by an echocardiogram are welcome. Please bring all of your medications when you come to the class. For info call **Patsy** or **Yolanda** at 2-3112.

- **LSU/Tulane Multidisciplinary Tumor Board Meeting.** Each Friday, noon-1 p.m., 1542 Tulane Avenue, room 710. Physicians wishing to present a case should call **Nicole Chatelain**, 568-4765.

- **Employee Assistance Programs.** All the following groups meet at LSU Lions Clinic, 2020 Gravier Street, 5th floor. Call 568-3931 with questions or for full details: **Co-dependency Anonymous**, Mondays at noon, free; **AA**, Tuesdays at noon, free; and the **Chemical Dependency Education Group** for those who may be chemically dependent or have family members who are, Thursdays, 4-5 p.m., \$10 per group period.



## Miss Teen Louisiana-America Visits “The Healing Place”

On Saturday September 11<sup>th</sup> *Whitney Breaux*, Miss Teen Louisiana-America, visited 9-West, “The Healing Place,” on Charity Campus. Above, center, she takes time out for a picture with some of our 9 West staff, left to right, *Trinetia Nunnery, RN, Bobbie Achilles*, Housekeeper, *Shirley Batiste, NA, Denise Nettles-Walker, RN*, Clinical Coordinator, *Rebecca Hogg, RN, Sandra McCormick*, Clerk Chief 1, *Mitch Handrich, RN*, and *Diana Wells LPN*.

When Whitney, a senior at Baton Rouge High School, was crowned, her platform was entitled “Pay It Forward Louisiana,” a program that teaches HIV/AIDS education and prevention to young adults across Louisiana. She became interested in the subject when a close friend was tested for HIV, and she supported her while she went through the stressful ordeal of wondering whether or not she had contacted the virus that causes AIDS. Whitney realized then that young adults need to be provided with more information and education about HIV/AIDS, and she believed that they would more likely listen if that information came from someone their own age.

Through “Pay It Forward Louisiana” HIV/AIDS experts teach young adults the facts

about the virus, how it is contacted, how to get tested, and what to expect if someone tests positive. Those young adults then go into the high schools and throughout the community teaching other young adults about the virus.

When The Healing Place staff heard about Whitney and her program they invited her to visit the unit and the patients, and she graciously accepted the invitation. Mitch Handrich, RN Manager of The Healing Place, said, “Whitney is an intelligent, remarkable, genuine, caring and amazing individual. She ‘lit up’ our unit when she walked through the doors. She spoke with several of the patients about how they have dealt with having HIV and how it has affected them and their families. She also autographed photographs for the patients and the staff. The unit was really on a ‘high’ when she left, and her visit was a treat for the patients and staff alike.”

To contact Whitney about an appearance to promote Pay it Forward Louisiana, go to <http://payitforwardla.tripod.com>.



In August and September, 2004, a telephone survey designed to determine the attitudes and opinions of Southerners about a number of pain related issues was conducted by the Survey Research Unit of the Social Science Research Center, Mississippi University. Some important findings from Louisiana's portion of the 2004 Southern Region Pain Prevalence Study were: overall, 27 percent of people in Louisiana suffer from moderate or severe pain; for 26 percent of people in Louisiana, pain interferes with daily activities including work, recreation, sleep and relationships with loved ones; 37 percent of people in Louisiana experience pain on at least a monthly basis, and of those 71 percent experience moderate or severe pain; of those living in Louisiana with chronic pain (moderate or severe pain on at least a monthly basis), 97 percent said pain interferes with daily activities such as relationships with loved ones, work, recreation, and/or sleep; and for Louisiana residents with chronic pain, 13 percent have never seen a healthcare provider for their pain.

So what does this mean for us at MCL? It means we have to ask our patients about their pain and believe what they tell us. Sometimes patients do not ask for pain medications for fear of being troublesome or becoming addicted, or believing that daily pain is a part of life. Living in pain is **not** normal or acceptable. Based on the numbers of patients taking medications for pain, rarely do many if any become addicted to their medications. Ask the patient if he/she is experiencing pain and to score it on a scale of one to 10. Give pain medications as needed to assist the patient to feel better so that he can move in bed comfortably, walk in the halls, and participate in physical therapy if ordered. Help the patient to get better by making the assessment and treatment of his pain an important part of his plan of care. Make pain the fifth vital sign and an important part of your assessment each time you go to the bedside. If what you have done or given the patient to decrease his pain is not working, don't stop there – further interventions are necessary to make the patient more comfortable and free of pain.

For more information or questions call **Donna Earles, MN, APRN, BC**, Clinical Nurse Specialist for Pain Management, 903-3261.

## Condolences.

We extend our condolences to those who have suffered personal losses: in the Emergency Department – **Linda Branford**, her husband, Billy; **Gaynell Greig**, her mother, Joycelyn Leray Murtagh; **Darlene Mitchell**, her brother, Andrew Woodcox, Jr.; **Patty Mouton**, her brother-in-law, Ronnie Brashier; and **Pam Orazio**, her father, John Davi Orazio, Sr.; and to **Yvonne Richardson** and **Diann Williams**, Human Resources, and **Corey Lafayette**, Nursing, on the loss of Beatrice Shortt, Yvonne's mother, Diann's grandmother-in-law, and Corey's grandmother.

## Please help.

Reaching out to help in the community can extend into the world community, far beyond the boundaries of our city and state. This is such an appeal. The Adventist Community Services is working collaboratively with the First Haitian Baptist Church in collecting personal items (deodorant, soap, toothpaste, toothbrushes, etc.) and clothes that are in good condition to be shipped to Haiti to help those suffering from devastating loss and destruction following hurricanes. Clothes can be dropped off at 2401 General Meyer Avenue in Algiers, across from the Naval Support Activity, or you may call either **Pastor Don Fougere** or **Micheline Joseph** at 250-3445 to arrange for a pick-up of the items. The deadline for getting clothes to Adventist Community Services is October 15. Please contact **Irene Ceesay** at 568-3931 daytime or 366-0656 if you need further information. Irene works with the LSUHSC Campus/Employee Assistance Program and is Director of Adventist Community Services. Please help if you can.

...

**This Week at MCL** is published through the Medical Center of Louisiana Human Resources Department, **Ron Broadus**, Assistant Administrator, **Lynn Lorando**, Editor. The department is located in the Butterworth Building, 1541 Tulane Avenue, New Orleans, 70112; the editor's office is in room 409. Unless it falls on a holiday, 5 p.m. Monday is the standing deadline for the following week's issue of this publication. All items must have prior supervisory approval before being submitted. Either digital or hard copies of pictures are welcomed; hard copies will be returned but not necessarily in the same size as submitted. Thank you.